



PARTS DRAWING

BARRETO

**13hp Hydraulic Rear
Tine Tiller**

**Product Code:
BAR1320**



Serial Number Range:

From:

To:

Year Of Manufacture: 2004

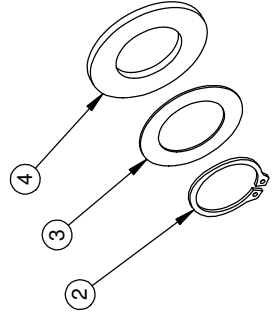
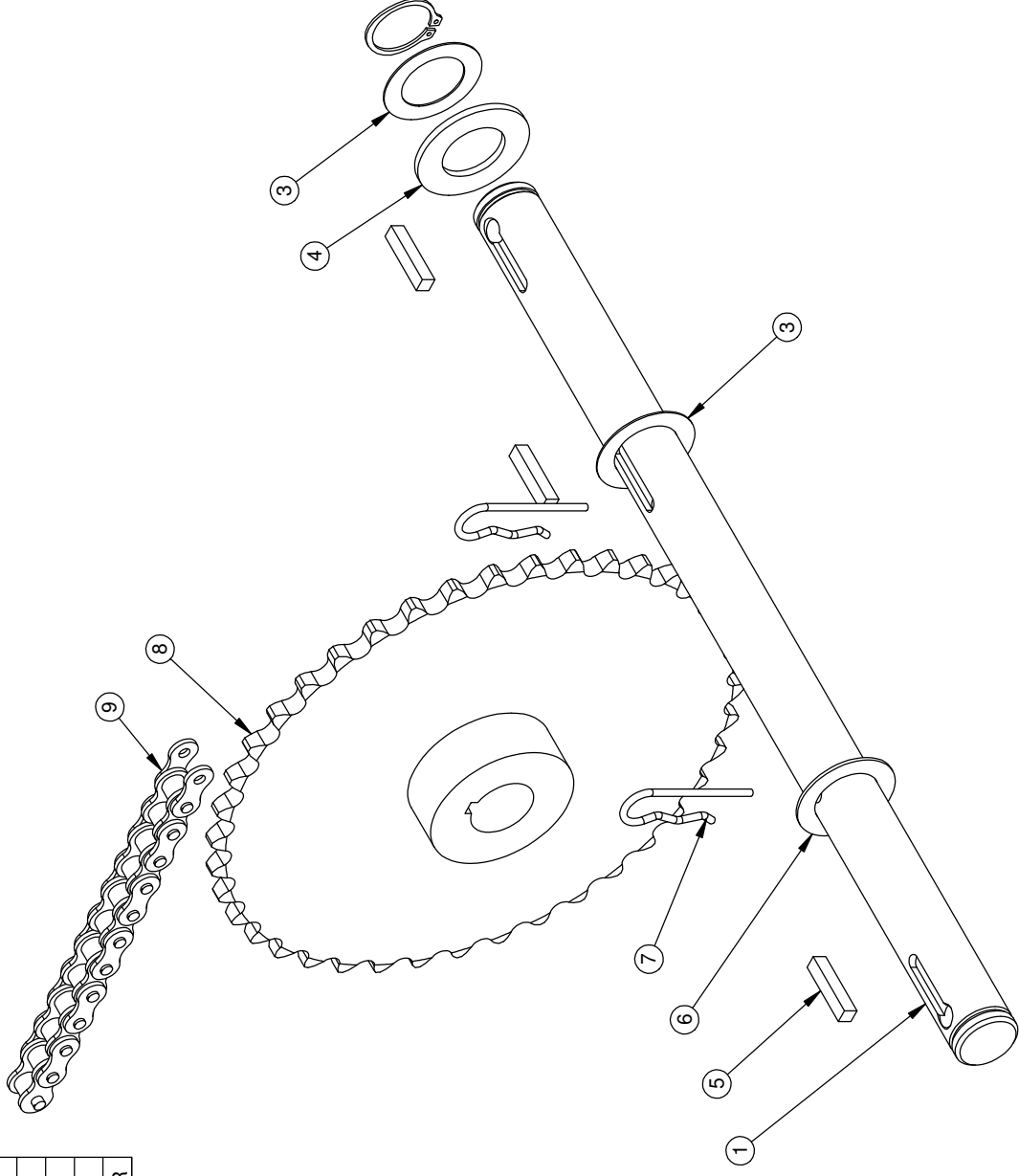
***Please note, when ordering online via our website if the part number is not recognised,
please Email spares@hscgroupuk.co.uk or Telephone 0115 946 1988**

KEEP THIS BOOKLET FOR FUTURE REFERENCE

Nottingham: 0115 946 1988 • London: 0208 830 3333 ✉ Nottingham: sales@hscgroupuk.co.uk • London: sean@hscgroupuk.co.uk 🌐 www.hscgroupuk.co.uk

The Hire Supply Company Terms & Conditions Apply At All Time E&OE

REF.	QTY.	PART NO.	DESCRIPTION
1	1	10804	AXLE, WHEEL
2	2	05606	SNAP RING, 1-1/8" EXTERNAL
3	3	03008	THRUST WASHER, 1-1/8 X 1-3/4 X .030
4	2	03013	FELT WASHER, 1-1/8 X 2 X 1/8
5	3	05018	KEY, 1/4 X 1/4 X 1-1/4 HARDENED
6	1	03039	THRUST WASHER, 1-1/8 X 1-3/4 X .060
7	2	05033	HAIR SPRING COTTER #8
8	1	02006-F	SPROCKET, #50 40 TOOTH
9	1	03015-L	#50 ROLLER CHAIN, 63 PITCH WITH MASTER

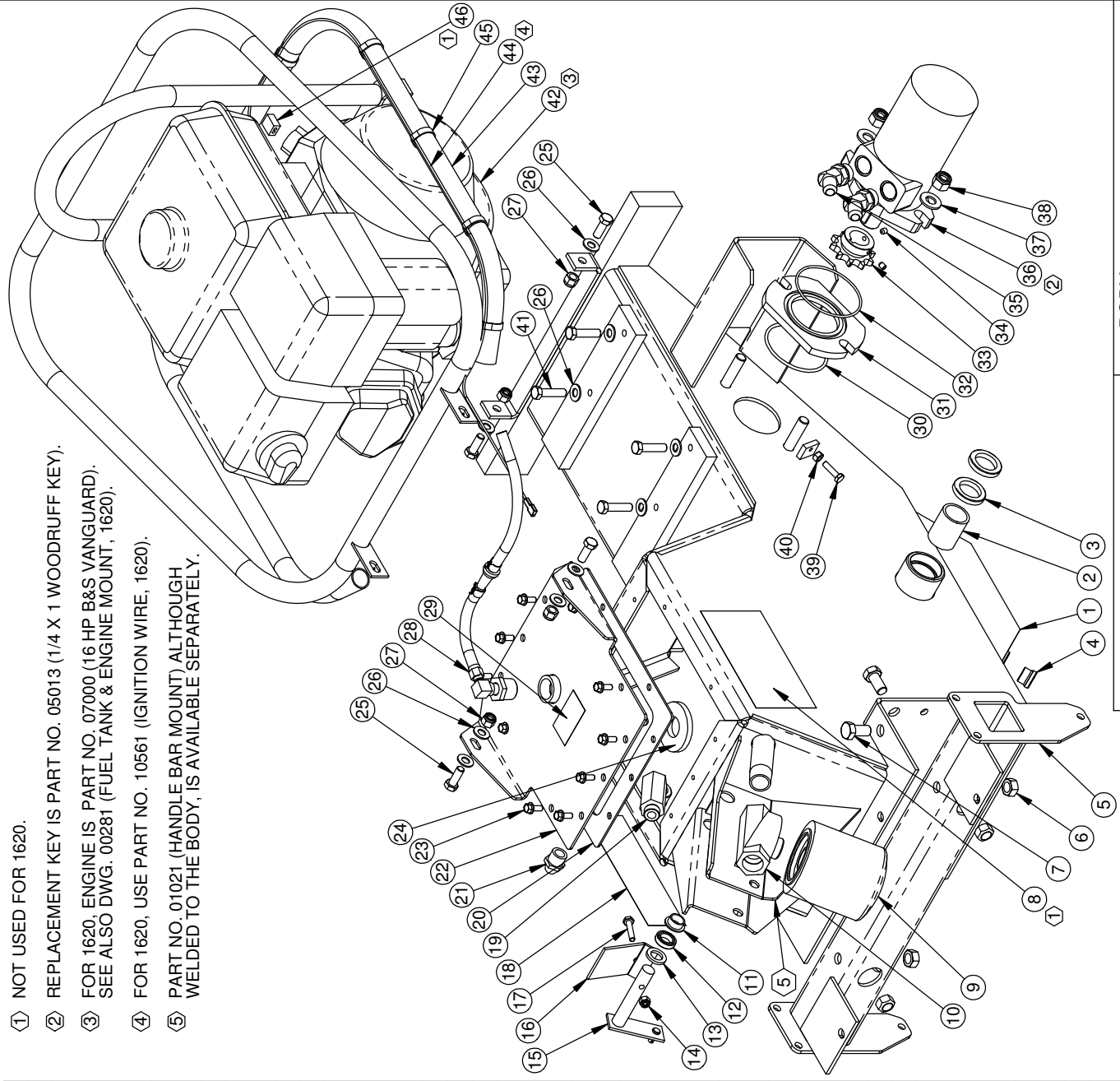


BARRETO

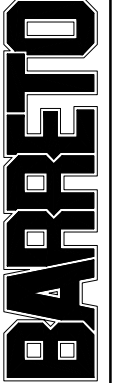
TITLE: AXLE,
FOR 1-1/8" FREE WHEEL HUBS
PRODUCT LINE: 1320 & 1620 9/23/04
SCALE: 1:3 SHEET 1 OF 1 DWG# 00278

REF. QTY.	PART NO.	DESCRIPTION
1	10532	BODY
2	03007	BUSHING, AXLE
3	03012	SEAL, AXLE
4	10361	FITTING, 6409-8 PLUG
5	10536	TORQUE TUBE, 21"
6	05046	NUT, GRIPCO, 1/2-13 NC
7	05067	HH CAP SCREW, 1/2-13 NC X 1 G5 ZINC
8	03040-10	DECAL, "1320"
9	03951	FILTER, HYDRAULIC OIL, WITH BY-PASS
10	04212-Z	OIL FILTER MOUNT
11	03060	BUSHING, NYLON, IGUS MFI-1012-06
12	03020	SEAL
13	03061	FELT WASHER, 5/8 X 1 X 1/8
14	05096	NUT, NYLOCK, 1/4-20 NC
15	01038	ACTUATOR ARM
16	01037	ACTUATOR PLATE
17	05125	HH CAP SCREW, 1/4-20 NC X 1-1/4 G5 ZINC
18	03040-11	DECAL, "BARRETO", 2-3/16 X 7-3/8
19	04009-O	RELIEF VALVE, 500 POUND, O-RING
20	03041	GASKET, TILLER LID
21	03503	SIGHT GAUGE
22	01022	LID
23	05069	WHIZ LOCK, 1/4-20 UNC X 5/8
24	03520	MAGNET
25	05056	HH CAP SCREW, 3/8-24 NF X 1 G5 ZINC
26	05101	WASHER, 3/8 SAE ZINC
27	05072	NUT, NYLOCK, 3/8-24 NF
28	04517	VENT HOSE ASSEMBLY
29	03040-06	DECAL, "HYDRAULIC OIL ONLY"
30	03000	O-RING, 2-234, 3-1/4 OD X 1/8 SECTION
31	02004	WHEEL MOTOR SPACER
32	03001	O-RING, 2-152, 3-7/16 OD X 3/32 SECTION
33	02014	SPROCKET, #50 10 TOOTH
34	05021	SET SCREW, 1/4-20 UNC X 5/16, CUP POINT
35	04557	FITTING, 6802-8-10
36	04003-F	WHEEL DRIVE MOTOR WITH KEY
37	05102	WASHER, 1/2 SAE ZINC HARDENED
38	05098	NUT, NYLOCK, 1/2-13 NC
39	05237	HH CAP SCREW, 1/4-20 NC X 1 G5 ZINC
40	05090	NUT, 1/4-20 NC ZINC
41	05092	HH CAP SCREW, 3/8-16 NC X 1-1/2 G5 ZINC
42	07005	ENGINE, 13 HP HONDA GX390
43	01033-B	ENGINE GUARD
44	06422	IGNITION WIRE, 78"
45	03035	TIE WRAP, 1/8 X 6
46	03806	QUICK-SPLICE

- ① NOT USED FOR 1620.
- ② REPLACEMENT KEY IS PART NO. 05013 (1/4 X 1 WOODRUFF KEY).
- ③ FOR 1620, ENGINE IS PART NO. 07000 (16 HP B&S VANGUARD). SEE ALSO DWG. 00281 (FUEL TANK & ENGINE MOUNT, 1620).
- ④ FOR 1620, USE PART NO. 10561 (IGNITION WIRE, 1620).
- ⑤ PART NO. 01021 (HANDLE BAR MOUNT) ALTHOUGH WELDED TO THE BODY, IS AVAILABLE SEPARATELY.

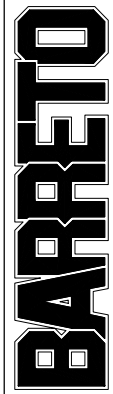
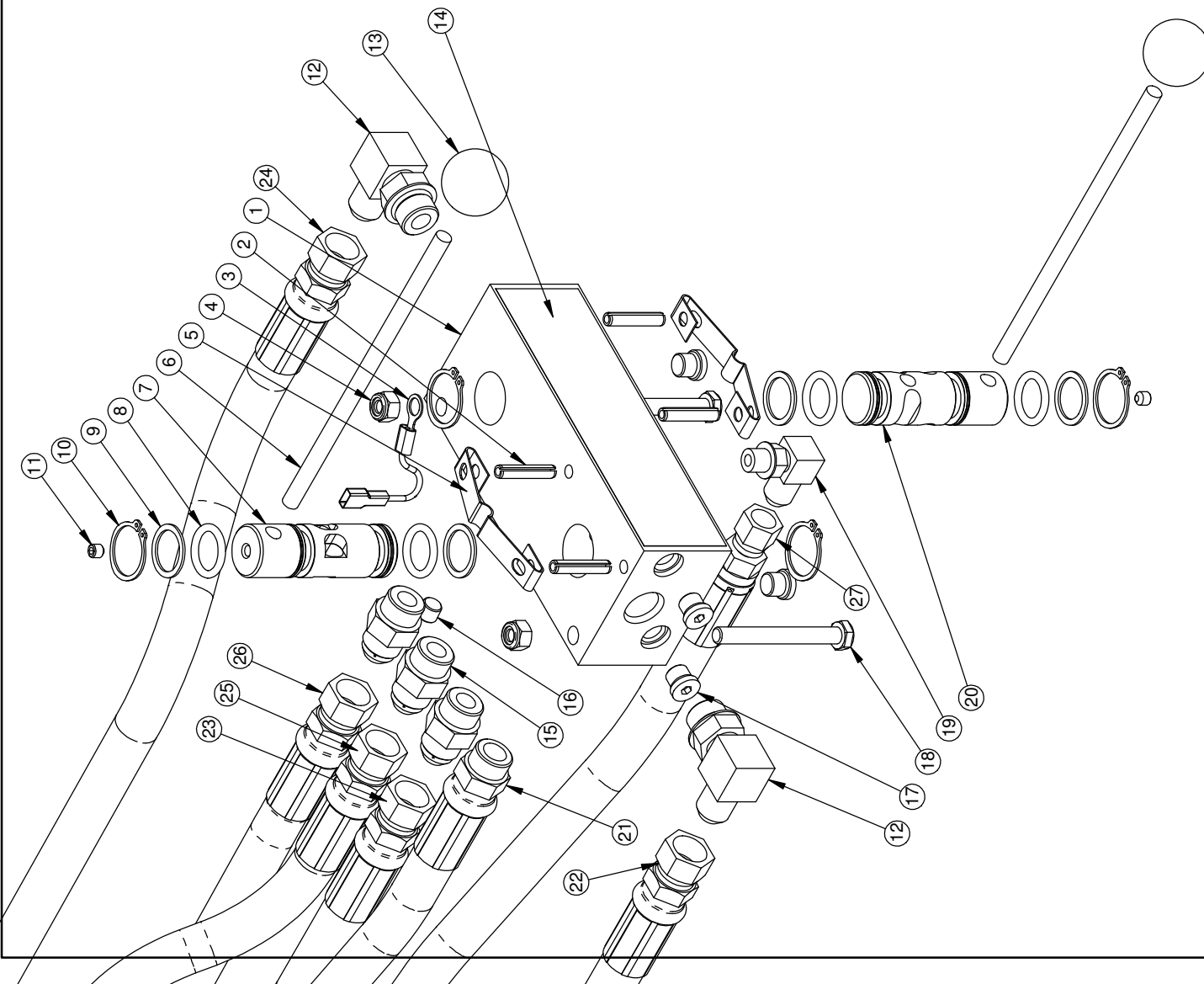


TITLE: BODY



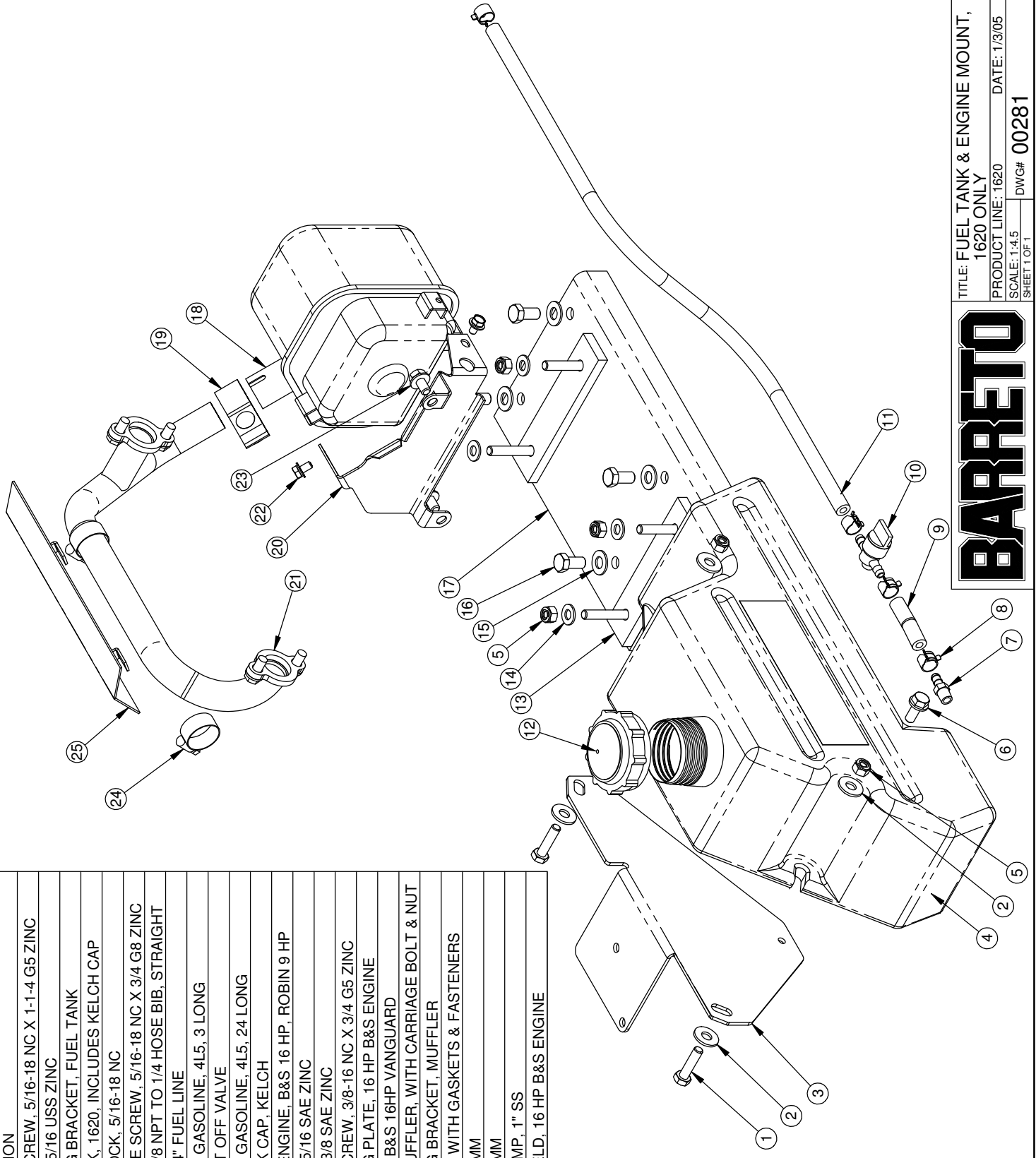
PRODUCT LINE: 1320 & 1620 DATE: 10/8/04
 SCALE: 1:7.5 DWG# 00279 R1
 SHEET 1 OF 1

REF. QTY.	PART NO.	DESCRIPTION
1	04010	CONTROL VALVE BODY
2	05200	ROLL PIN (SLOTTED SPRING), 1/4 X 1-1/4 ZINC
3	06421	GROUND WIRE, IGNITION SWITCH
4	05273	NUT, NYLOCK, 5/16-18 NC
5	03027	DETENT SPRING
6	02017	HANDLE, 5/16 X 7
7	04015-D	VALVE SPOOL, TINES
8	03002	O-RING, 2-210, 1" OD X 1/8 SECTION
9	03025	BACK-UP RING, 1" TEFLON
10	05010	SNAP RING, 1" EXTERNAL
11	05020	SET SCREW, 1/4-20 NC X 1/4
12	04554	FITTING, 6801-8-8
13	03026	KNOB, 5/16-NC
14	03040	DECAL, CONTROL VALVE
15	04520	FITTING, 6400-8-8
16	05023	PIPE PLUG, 1/8"
17	03300	FITTING, 6409-4 PLUG
18	05065	HH CAP SCREW, 5/16-18 NC X 2-3/4 G5 ZINC
19	04526-01	FITTING, 6801-6-4
20	04015-C	VALVE SPOOL, WHEEL DRIVE
21	04308	HOSE, CONTROL VALVE TO ACTUATOR TEE FITTING
22	04309	HOSE, CONTROL VALVE TO TINE MOTOR LOWER PORT
23	04310	HOSE, CONTROL VALVE TO TINE MOTOR UPPER PORT
24	04311	HOSE, CONTROL VALVE TO WHEEL MOTOR LOWER PORT
25	04312	HOSE, CONTROL VALVE TO WHEEL MOTOR UPPER PORT
26	04313	HOSE, CONTROL VALVE TO OIL FILTER MOUNT
27	04314	HOSE, CONTROL VALVE TO WHEEL RELIEF VALVE



TITLE: CONTROL VALVE
 PRODUCT LINE: 1320 & 1620 DATE: 9/29/04
 SCALE: 1:3 DWG# 00280
 SHEET 1 OF 1

REF. QTY.	PART NO.	DESCRIPTION
1	2	05297 HH CAP SCREW, 5/16-18 NC X 1-1/4 G5 ZINC
2	4	10615 WASHER, 5/16 USS ZINC
3	1	10556 MOUNTING BRACKET, FUEL TANK
4	1	10559 FUEL TANK, 1620. INCLUDES KELCH CAP
5	6	05273 NUT, NYLOCK, 5/16-18 NC
6	1	05131 HH FLANGE SCREW, 5/16-18 NC X 3/4 G8 ZINC
7	1	03062-04 FITTING, 1/8 NPT TO 1/4 HOSE BIB, STRAIGHT
8	4	03062-06 CLAMP, 1/4" FUEL LINE
9	1	04295 HOSE, 1/4" GASOLINE, 4L5, 3 LONG
10	1	03062-00 FUEL SHUT OFF VALVE
11	1	04295 HOSE, 1/4" GASOLINE, 4L5, 24 LONG
12	1	03062-12 FUEL TANK CAP, KELCH
13	2	01014 SPACER, ENGINE, B&S 16 HP, ROBIN 9 HP
14	4	05068 WASHER, 5/16 SAE ZINC
15	4	05101 WASHER, 3/8 SAE ZINC
16	4	05057 HH CAP SCREW, 3/8-16 NC X 3/4 G5 ZINC
17	1	01013 MOUNTING PLATE, 16 HP B&S ENGINE
18	1	07000-01 MUFFLER, B&S 16HP VANGUARD
19	1	07000-02 CLAMP, MUFFLER, WITH CARRIAGE BOLT & NUT
20	1	07000-03 MOUNTING BRACKET, MUFFLER
21	1	07000-04 MANIFOLD WITH GASKETS & FASTENERS
22	2	03070 SCREW, 6MM
23	2	03071 SCREW, 8MM
24	2	05041 HOSE CLAMP, 1" SS
25	1	01040 HEAT SHIELD, 16 HP B&S ENGINE

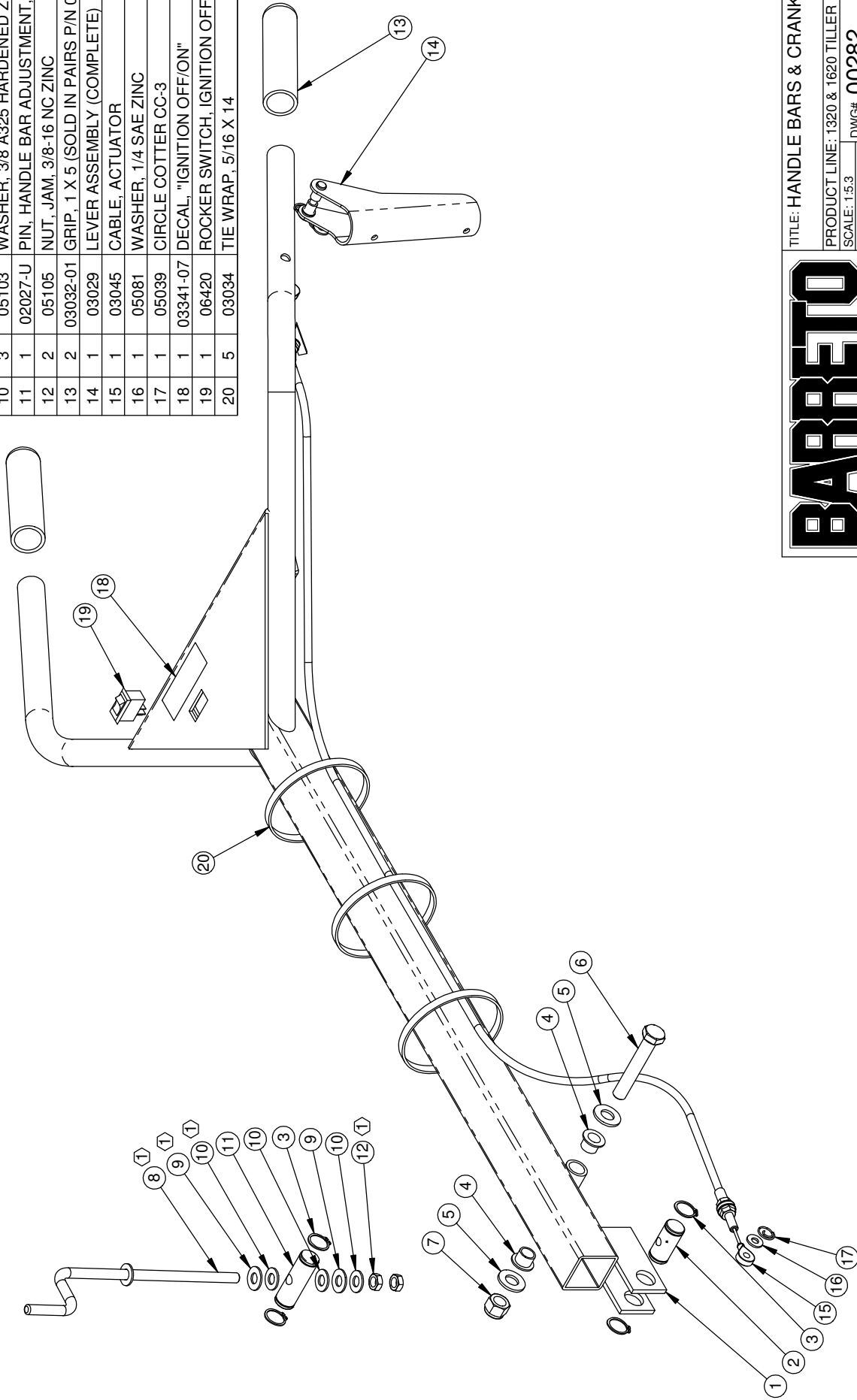


BARRETO

TITLE: FUEL TANK & ENGINE MOUNT,
1620 ONLY
PRODUCT LINE: 1620 DATE: 1/3/05
SCALE: 1:4.5 DWG# 00281
SHEET 1 OF 1

① INDICATED ITEMS MAY BE ORDERED AS A KIT, PART NO. 01030-KIT (KIT, HANDLE BAR ADJUSTMENT).

REF.	QTY.	PART NO.	DESCRIPTION
1	1	01017	HANDLE BARS
2	1	02027-L	HANDLE BAR ADJUSTER PIN, LOWER
3	4	05216	SNAP RING, 3/4 EXTERNAL
4	2	03501	BUSHING, NYLON, IGUS MFI-0810-08
5	2	05102	WASHER, 1/2 SAE ZINC HARDENED
6	1	05093	HH CAP SCREW, 1/2-13 NC X 3 G5 ZINC
7	1	05098	NUT, NYLOCK, 1/2-13 NC
8	1	01030	CRANK, HANDLE BAR ADJUSTMENT
9	2	05058	WASHER, 3/8 NYLON
10	3	05103	WASHER, 3/8 A325 HARDENED ZINC
11	1	02027-U	PIN, HANDLE BAR ADJUSTMENT, UPPER
12	2	05105	NUT, JAM, 3/8-16 NC ZINC
13	2	03032-01	GRIP, 1 X 5 (SOLD IN PAIRS P/N 03032)
14	1	03029	LEVER ASSEMBLY (COMPLETE)
15	1	03045	CABLE, ACTUATOR
16	1	05081	WASHER, 1/4 SAE ZINC
17	1	05039	CIRCLE COTTER CC-3
18	1	03341-07	DECAL, "IGNITION OFF/ON"
19	1	06420	ROCKER SWITCH, IGNITION OFF/ON
20	5	03034	TIE WRAP, 5/16 X 14



BARRETO

TITLE: HANDLE BARS & CRANK

PRODUCT LINE: 1320 & 1620 TILLER 10/8/04

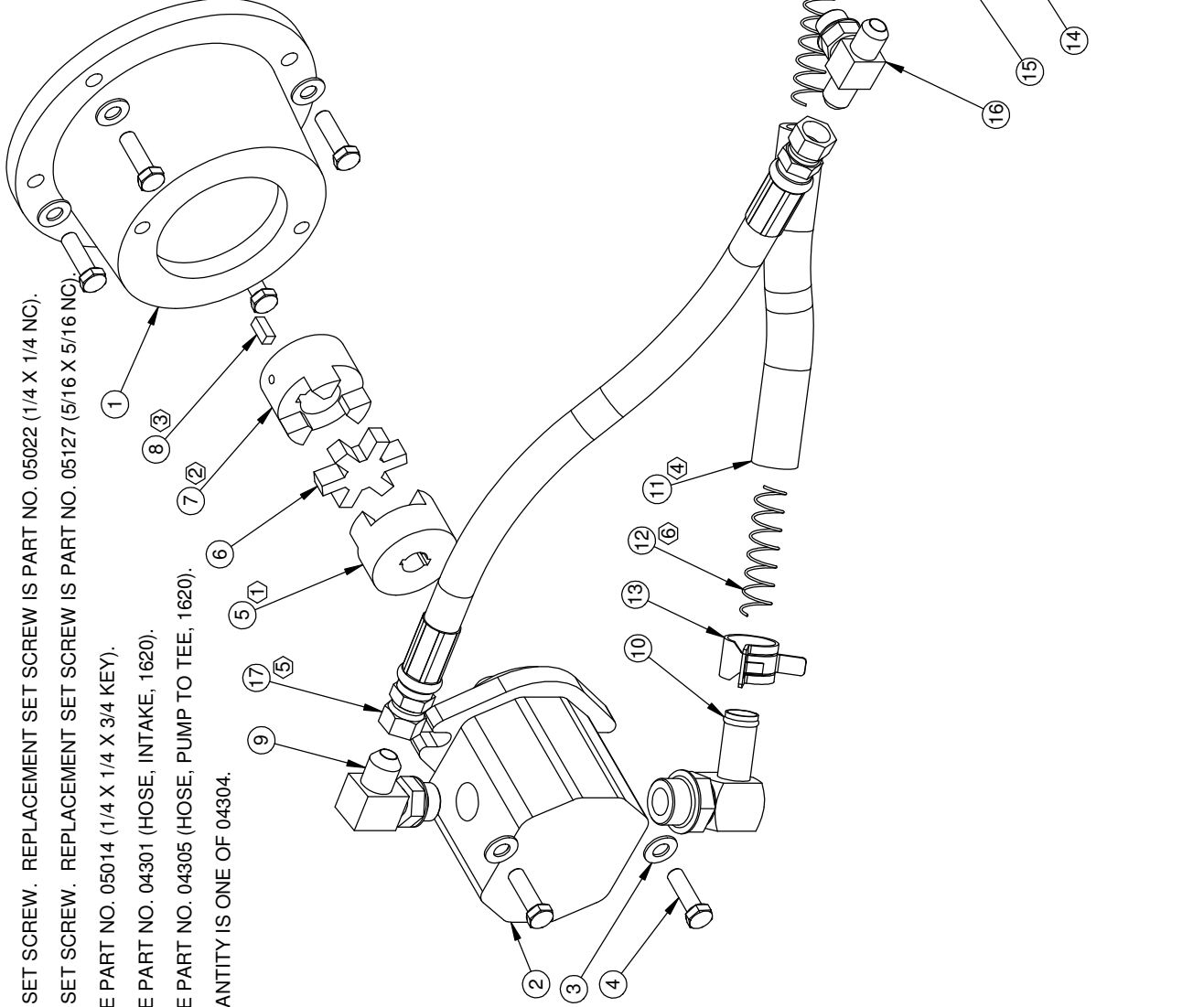
SCALE: 1:5.3

DWG# 00282

SHEET 1 OF 1

NOTES:

- ① COMES WITH SET SCREW. REPLACEMENT SET SCREW IS PART NO. 05022 (1/4 X 1/4 NC).
- ② COMES WITH SET SCREW. REPLACEMENT SET SCREW IS PART NO. 05127 (5/16 X 5/16 NC).
- ③ FOR 1620, USE PART NO. 05014 (1/4 X 1/4 X 3/4 KEY).
- ④ FOR 1620, USE PART NO. 04301 (HOSE, INTAKE, 1620).
- ⑤ FOR 1620, USE PART NO. 04305 (HOSE, INTAKE, 1620).
- ⑥ FOR 1620, QUANTITY IS ONE OF 04304.



REF.	QTY.	PART NO.	DESCRIPTION
1	1	02016	PUMP ADAPTER
2	1	04004-A	PUMP, HYDRAULIC
3	6	05101	WASHER, 3/8 SAE ZINC
4	6	05091	HH CAP SCREW, 3/8-16 NC X 1-1/4 G5 ZINC
5	1	03021	JAW COUPLER, PUMP, 5/8" BORE
6	1	03022	SPIDER, RUBBER
7	1	03023	JAW COUPLER, 1" BORE
8	1	05014-A	KEY, 1/4 X 1/4 X 5/8
9	1	04211	FITTING, 6801-8-10
10	1	04202	FITTING, 4601-12-12
11	1	04302	HOSE, INTAKE, 1320
12	2	04304	INTERNAL WIRE COIL
13	2	05008	CLAMP, 1" HOSE, CTB-29
14	1	04005	SUMP SCREEN
15	1	04201	FITTING, 4501-12-12
16	1	04017	FITTING, 6803-8-8-8
17	1	04306	HOSE, PUMP TO TEE, 1320



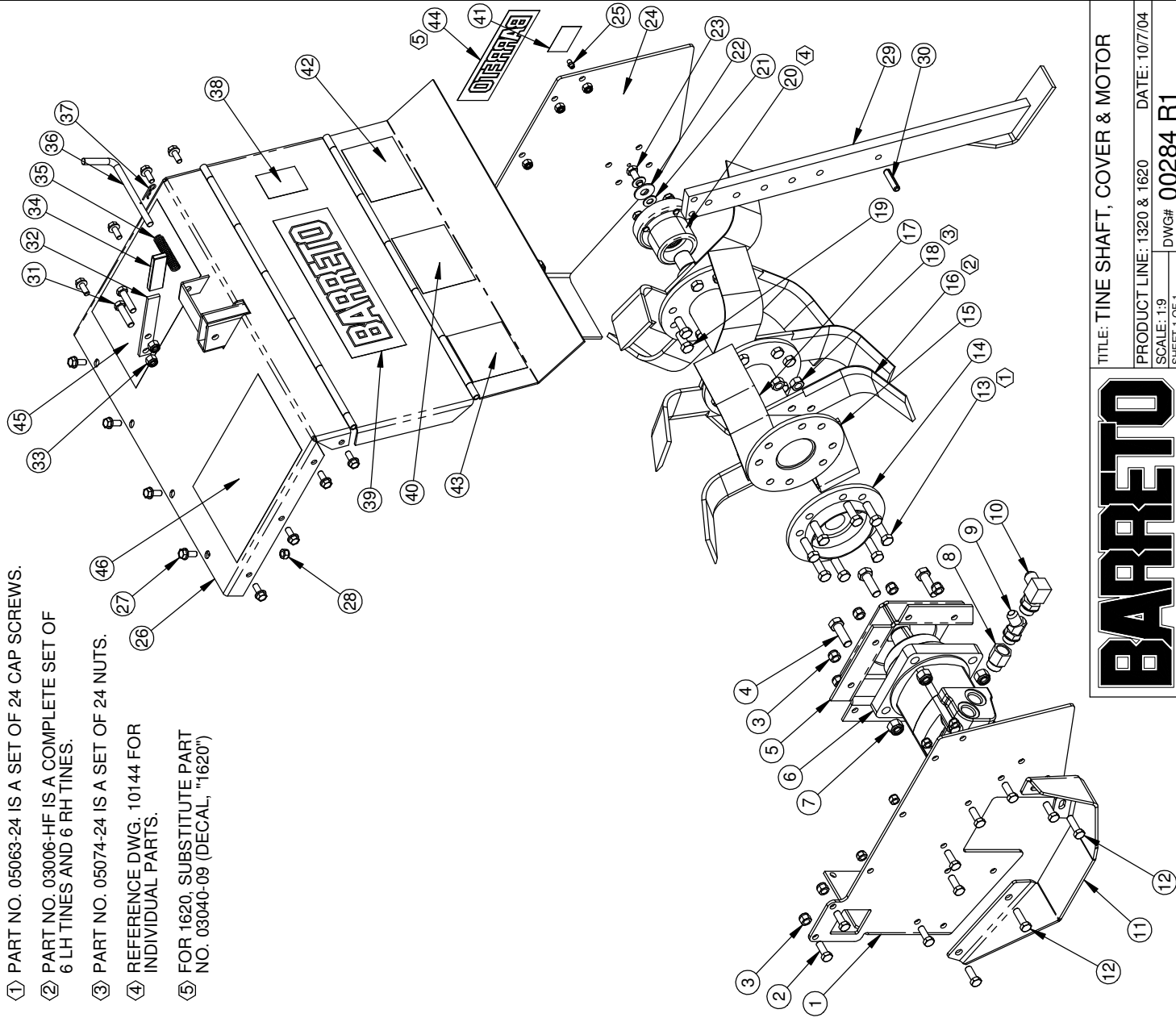
TITLE: PUMP & COUPLER

PRODUCT LINE: 1320 & 1620 DATE: 10/7/04

SCALE: 1:4 SHEET 1 OF 1 DWG# 00283

REF. QTY.	PART NO.	DESCRIPTION
1	10539	LH SIDE PLATE, TINE SECTION
2	05056	HH CAP SCREW, 3/8-24 NF X 1 G5 ZINC
3	05072	NUT, NYLOCK, 3/8-24 NF
4	05300-01	HH CAP SCREW, 1/2-13 NC X 1-1/2 G5 ZINC
5	01009	TINE MOTOR MOUNTING BRACKET
6	04000T-F	TINE MOTOR, 6.2 CU IN WITH KEY & NUT
7	05098	NUT, NYLOCK, 1/2-13 NC
8	04209	FITTING, 6410-10-8
9	04210	FITTING, 6802-8-8
10	04211	FITTING, 6801-8-10
11	01024	TINE MOTOR GUARD
12	05292	HH CAP SCREW, 3/8-24 NF X 1-1/4 G5 ZINC
13	05063	HH CAP SCREW, 7/16-20 NF X 1-1/4 G8 ZINC
14	01010-SGT	TINE MOTOR HUB, TAPERED BORE
15	01011	TINE SHAFT
16	03006-L	LH TINE, HARDFACED
17	03006-R	RH TINE, HARDFACED
18	05074	NUT, 7/16-20 NF G8 ZINC
19	05061	HH CAP SCREW, 7/16-20 NF X 1 G8 ZINC
20	10144	OUTBOARD BEARING ASSEMBLY
21	05103	WASHER, 3/8 A325 HARDENED ZINC
22	05083	WASHER, 7/16 USS ZINC
23	05059	HH CAP SCREW, 3/8-16 NC X 1 G5 ZINC
24	10538	RH SIDE PLATE, TINE SECTION
25	05044	GREASE ZERK, 1/4-28 UNF
26	01008	TINE COVER, 1320/1620
27	05140	WHIZ LOCK, 5/16 x 3/4
28	05273	NUT, NYLOCK, 5/16-18 NC
29	01012	DEPTH BAR
30	05006	ROLL PIN (SLOTTED SPRING), 3/8 X 1-1/2 ZINC
31	05092	HH CAP SCREW, 3/8-16 NC X 1-1/2 G5 ZINC
32	01099	HANDLE, DEPTH BAR
33	05073	NUT, NYLOCK, 3/8-16 NC
34	03018	GRIP
35	03080	SPRING
36	01018	PIN, DEPTH BAR
37	03065	HAIR SPRING COTTER #4
38	03040-01	DECAL, "MADE IN USA"
39	03040-02	DECAL, "BARRETO", 3-1/2 X 11-1/4
40	03040-03	DECAL, "CAUTION" (BLACK & WHITE)
41	03040-04	DECAL, "GREASE DAILY"
42	03040-07	DECAL, "CAUTION" (YELLOW)
43	03040-08	DECAL, "WARNING" (YELLOW)
44	03040-11	DECAL, "BARRETO", 2-3/16 X 7-3/8
45	03341-22	DECAL, "TILLER OPERATING INSTRUCTIONS"
46	03341-23	DECAL, "TILLER SAFETY INSTRUCTIONS"

- ① PART NO. 05063-24 IS A SET OF 24 CAP SCREWS.
- ② PART NO. 03006-HF IS A COMPLETE SET OF 6 LH TINES AND 6 RH TINES.
- ③ PART NO. 05074-24 IS A SET OF 24 NUTS.
- ④ REFERENCE DWG. 10144 FOR INDIVIDUAL PARTS.
- ⑤ FOR 1620, SUBSTITUTE PART NO. 03040-09 (DECAL, "1620")



BARRETO

TITLE: TINE SHAFT, COVER & MOTOR

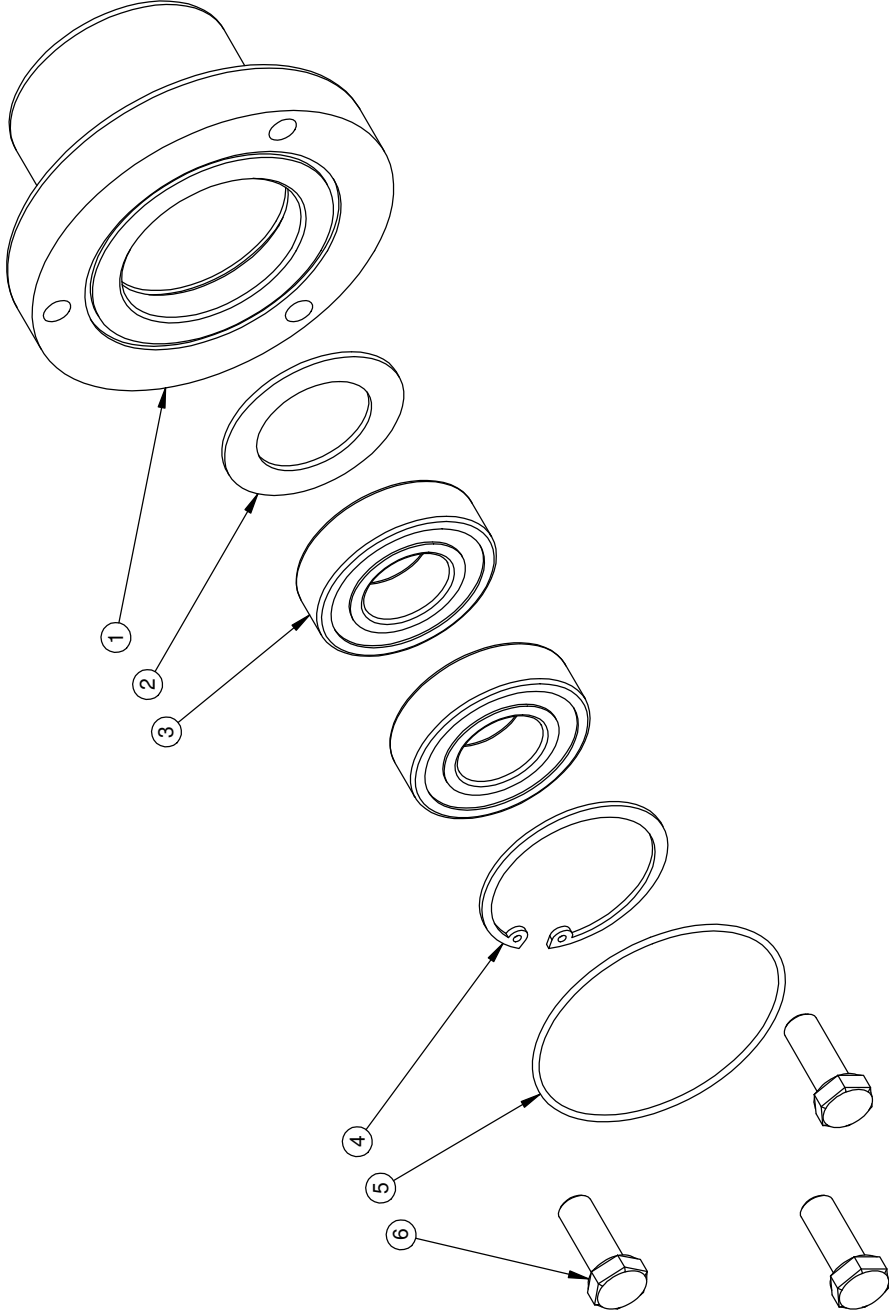
PRODUCT LINE: 1320 & 1620 DATE: 10/7/04

SCALE: 1:9

SHEET 1 OF 1

DWG# 00284 R1

REF.	QTY.	PART NO.	DESCRIPTION
1	1	01027+	OUTBOARD BEARING HOUSING, 3 BOLT
2	1	01026	SHIELD, OUTBOARD BEARING
3	2	03043	BALL BEARING, 6205
4	1	05024	SNAP RING, HO-200, 2" INTERNAL
5	1	03233	O-RING, 2-039, 2-7/8 OD X 1/16 SECTION
6	3	05059	HH CAP SCREW, 3/8-16 NC X 1 G5 ZINC



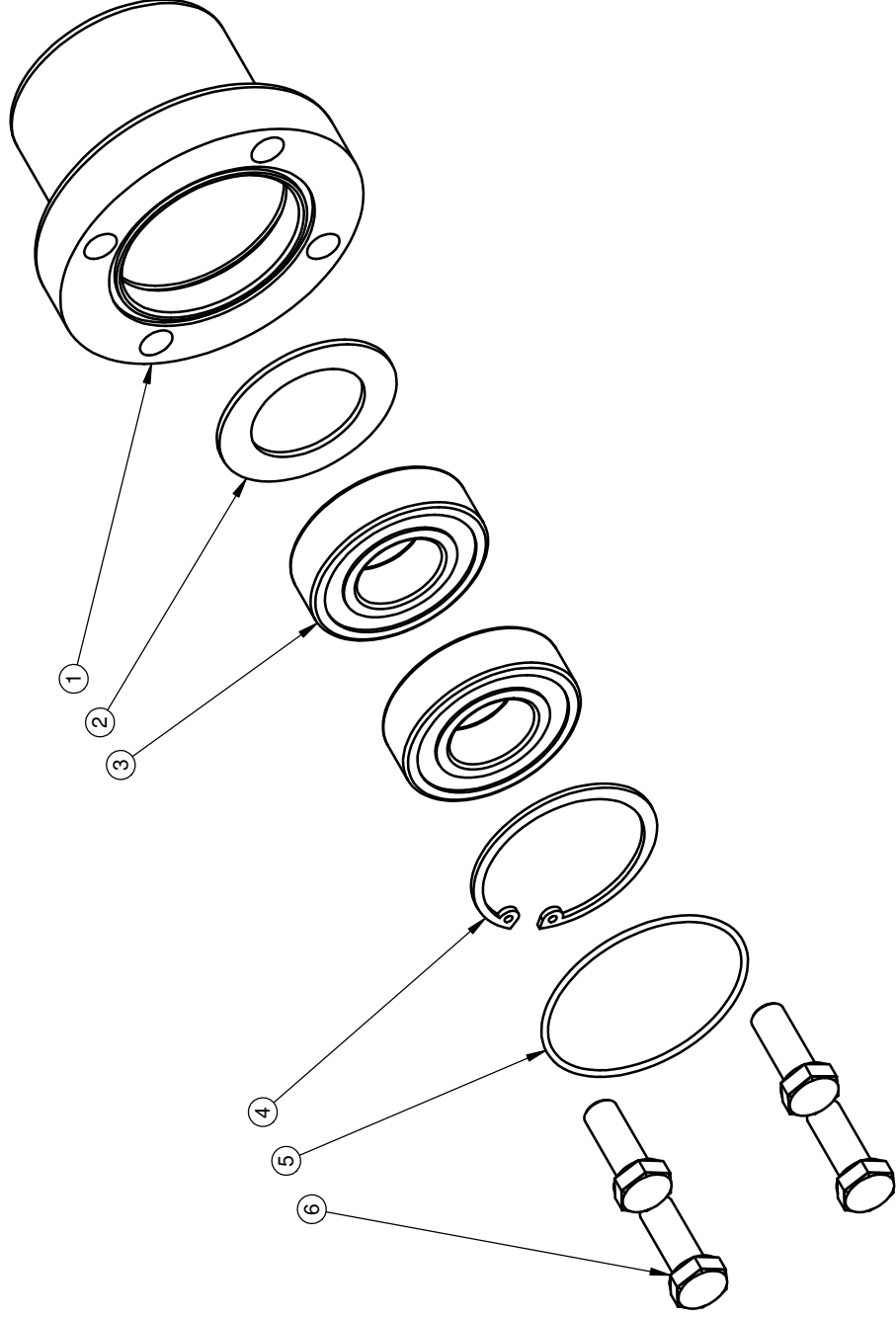
BARRETO

TITLE: OUTBOARD BEARING ASSEMBLY,
3 BOLT

PRODUCT LINE: COMMON DATE: 3/2/04

SCALE: 1:2 SHEET 1 OF 1 DWG# 01028+

REF	QTY.	PART NO.	DESCRIPTION
1	1	10142	OUTBOARD BEARING HOUSING, 4 BOLT
2	1	01026	SHIELD, OUTBOARD BEARING
3	2	03043	BALL BEARING, 6205
4	1	05024	SNAP RING, HO-200, 2" INTERNAL
5	1	03904	O-RING, 2-035, 2-3/8 OD X 1/16 SECTION
6	4	05059	HH CAP SCREW, 3/8-16 NC X 1 G5 ZINC



TITLE: OUTBOARD BEARING ASSEMBLY,
4 BOLT

PRODUCT LINE: COMMON DATE: 3/2/04

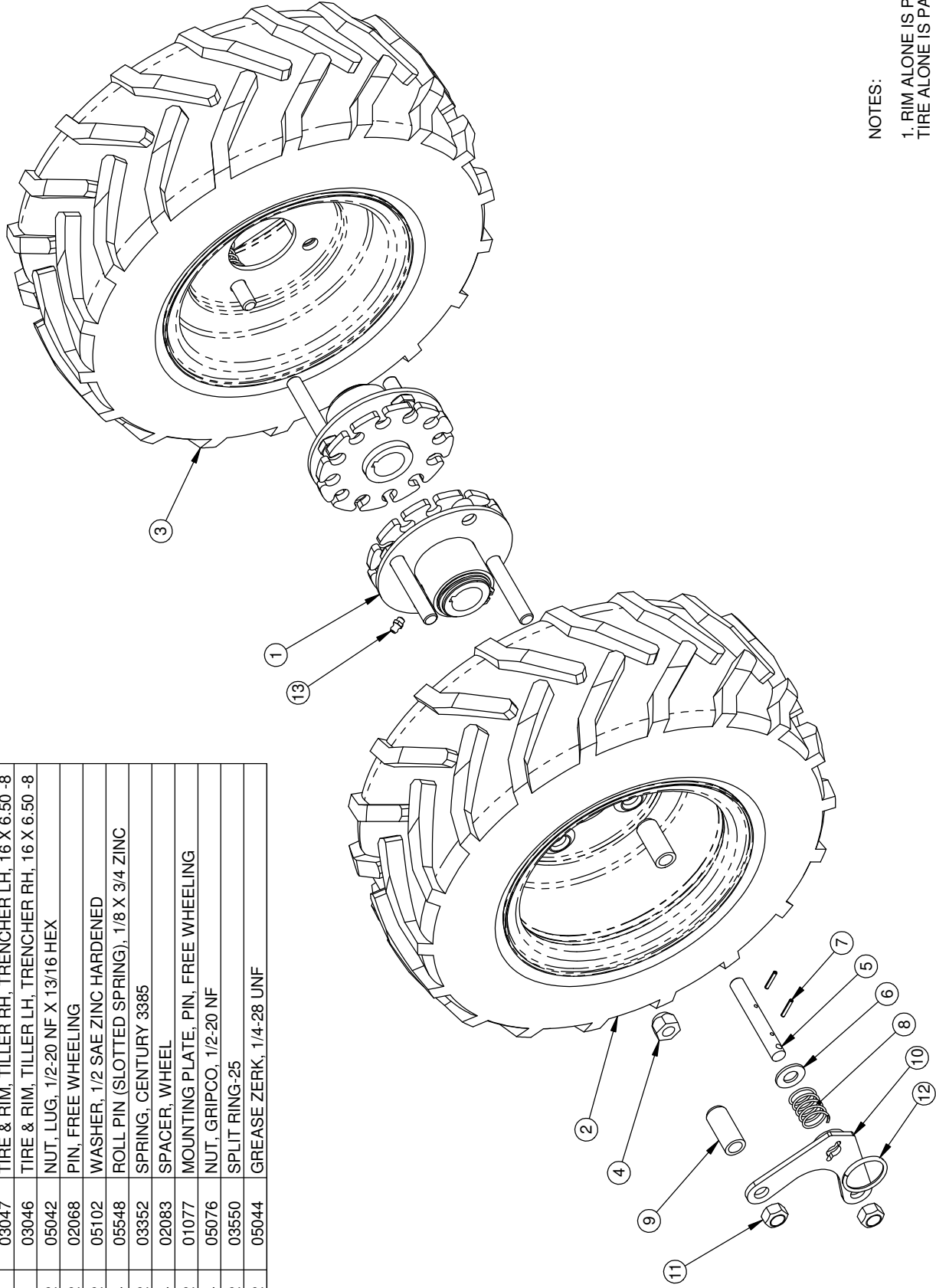
SCALE: 1:2

SHEET 1 OF 1

DWG# 10144

BARRETO

REF. QTY.	PART NO.	DESCRIPTION
1	2	02269-HUB
		WHEEL HUB ASSY, 1-1/8" BORE
2	1	03047
		TIRE & RIM, TILLER RH, TRENCHER LH, 16 X 6.50 -8
3	1	03046
		TIRE & RIM, TILLER LH, TRENCHER RH, 16 X 6.50 -8
4	2	05042
		NUT, LUG, 1/2-20 NF X 13/16 HEX
5	2	02068
		PIN, FREE WHEELING
6	2	05102
		WASHER, 1/2 SAE ZINC HARDENED
7	4	05548
		ROLL PIN (SLOTTED SPRING), 1/8 X 3/4 ZINC
8	2	03352
		SPRING, CENTURY 3385
9	4	02083
		SPACER, WHEEL
10	2	01077
		MOUNTING PLATE, PIN, FREE WHEELING
11	4	05076
		NUT, GRIPCO, 1/2-20 NF
12	2	03550
		SPLIT RING-25
13	2	05044
		GREASE ZERK, 1/4-28 UNF



NOTES:

- 1. RIM ALONE IS PART NO. 03049
- TIRE ALONE IS PART NO. 03048

BARRETO

TITLE: FREE WHEEL HUBS & WHEELS

PRODUCT LINE: 1320 & 1620 DATE: 9/2/04

SCALE: 1:5 SHEET 1 OF 1

DWG# 10388



Recycling



ENVIRONMENTAL PROTECTION: Please recycle any unwanted materials as opposed to disposing them as general waste. It is recommended the original is retained and used to store the product when not in use for prolonged periods of time. If this is not applicable ensure the materials are sorted and recycled in accordance with local regulations.



SPECIFICATION CHANGE: It is our policy to continually improve products to ensure these meet the rigours of the industry we serve. Therefore, as such we reserve the right to alter specifications, data, components & parts with-out prior notice.

WARRANTY: Please refer to the manufactures terms & conditions.

IMPORTANT: No liability will be accepted for the incorrect use of this product.

KEEP THIS BOOKLET FOR FUTURE REFERENCE

📞 Nottingham: 0115 946 1988 • London: 0208 830 3333 ✉ Nottingham: sales@hscgroupuk.co.uk • London: sean@hscgroupuk.co.uk 🌐 www.hscgroupuk.co.uk

The Hire Supply Company Terms & Conditions Apply At All Time E&OE