



PARTS DRAWING

DOSKO

**13hp Honda GX390
Stump Grinder**

**Product Code:
DOSKO13HP**



Serial Number Range:

From:

To:

Year Of Manufacture: 2024

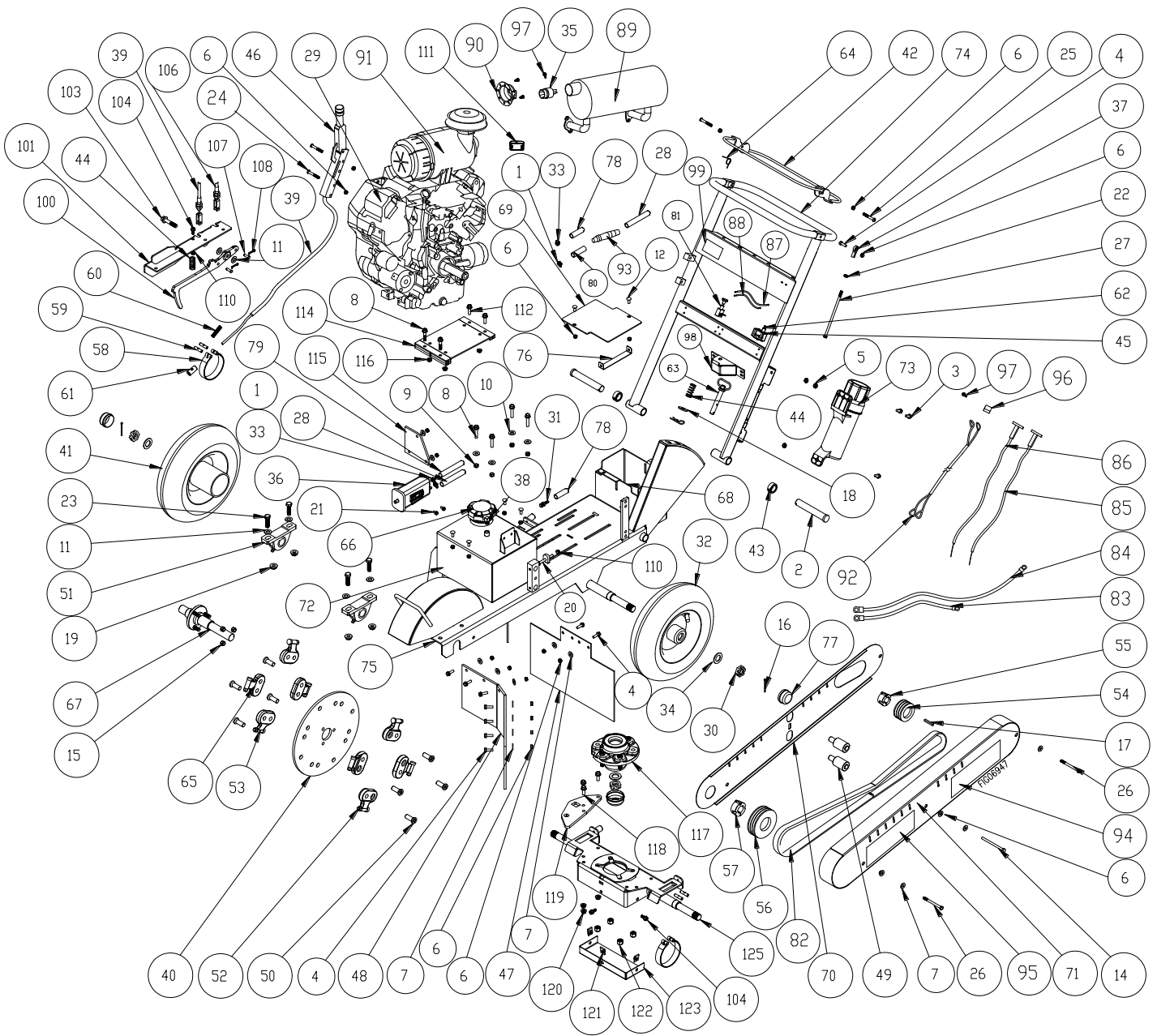
***Please note, when ordering online via our website if the part number is not recognised,
please Email spares@hscgroupuk.co.uk or Telephone 0115 946 1988**

KEEP THIS BOOKLET FOR FUTURE REFERENCE

Nottingham: 0115 946 1988 • London: 0208 830 3333 ✉ Nottingham: sales@hscgroupuk.co.uk • London: sean@hscgroupuk.co.uk 🌐 www.hscgroupuk.co.uk

The Hire Supply Company Terms & Conditions Apply At All Time E&OE

Parts Drawing - Rev AC - 2024



Parts List - Rev AC - 2024

Parts Highlighted in green fit the DOSKO13HP

Item	Part #	Description	Qty	Model
1	30746	3/8" Hose Clamp	2	620
2	37878	1" x 6" Clevis Pin	2	All
3	82015	5/16"-18 x 3/4" HHSF Bolt	3	All
4	82016	5/16"-18 x 1" HHSF Bolt	11	All
5	82630	5/16"-18 Ser. Flange Nut	7	All
6	82020	5/16"-18 Nylon Locknut	17	337
			19	337S
			23	357
			29	620
7	82021	5/16" USS Flat Washer	12	337
			13	337S
			18	620
8	82025	3/8"-16 x 1 3/4" HHSF Bolt	4	All
9	82027	3/8"-16 Nylon Locknut	4	All
10	82028	3/8" USS Flat Washer	4	All
11	82038	1/2" SAE Flat Washer	4	All
12	82088	5/16"-18 x 3/4" Carr. Bolt	6	620
14	82097	5/16"-18 x 4 1/2" HHCS Bolt	1	All
15	82334	7/16"-20 Nylon Locknut	3	All
16	82140	Cotter Pin	2	All
17	82143	1/4" X 1-3/4" Key	1	All
18	82286	5/8" USS Flat Washer	1	All
19	82291	1/2"-13 Flange Locknut	4	All
20	82096	5/16"-18 x 3.5" Bolt	1	All
21	82308	M6-1 x 12MM HHCS Bolt	2	620
22	82312	5/16"-24 Hex nut	1	All
23	82316	1/2"-13 x 1.75" Bolt	4	All
24	82322	5/16"-18 x 2.25" Bolt	2	All
25	82017	5/16"-18 x 1 1/2" Bolt	2	All
26	82353	5/16"-18 x 3.75" HHCS Bolt	2	All
27	82392	Linkage	1	All
28	801491	Hose, 3/8" Fuel Line	60"	620
29	787618	GX390 Honda Cyclone	1	337-13HC
	601091	GX390 Honda		337-13H
	787618	GX390 Honda Cyclone		337S-13HC
	803515	GX630 Honda		620-20HE
30	777124	1" Slotted Nut	2	All
31	777340	1/4" MPT x 1/4" Hose Barb	1	620
32	791875	Wheel	1	337 620
	803588	Wheel & Brake Drum	1	337S
33	777834	1/4" Hose Clamp	4	620
34	778844	Axle Washer	2	All
35	802314	Spark Arrestor	1	620
36	801497	Carbon Canister	1	620
37	782399	Ball Joint Rod	1	All
38	783212	1/4" x 1/4" Hose Barb Elbow	1	620
39	783295	Brake Cable	1	337 620
	801698		337S	
40	783480	Cutter Wheel, 14"	1	All
41	803588	Wheel & Brake Drum	1	All
42	803523	Operator Presence Handle	1	All
43	803313	Lock Collar	2	All
44	783539	2" Spring	1	337 620
			2	337S
45	783769	Microswitch Bracket	1	All
46	783547	Brake Lever Assembly	1	All
47	801705	End Flap	1	All
48	783551	Chute Flap	1	All
49	783552	Idler Bearing	2	All
50	783555	Lo-Pro Pocket Bolt	8	All
51	783556	Pillow Block Bearing	2	All
52	792160	700 Series Tooth	8	All
53	784166	700 Series Straight Pocket	4	All
54	783562	3" Sheave, 3 Groove	1	337 337S
	784052	3.35" Sheave, 4 Groove		620
-	-	-	-	-

Item	Part #	Description	Qty	Model
55	783563	Bushing, 1"	1	337 337S
	784053	Bushing, 1-1/8"		620
56	783564	4.75" Sheave, 3 Groove	1	337 337S
	784054	4.75" Sheave, 4 Groove		620
57	783565	Bushing, 1-3/16"	1	All
58	783567	4" Brake Band	1	337 620
			2	337S
59	783568	Floating Pin	2	337 620
			4	337S
60	783569	1.5" Spring	1	337 620
61	783570	Cable Clamp	1	All
62	783545	Microswitch	1	All
63	783774	4" Hitch Pin	1	All
64	783924	Spring	1	All
65	783559	700 Series Angled Pocket	4	All
66	784769	Sealed Fuel Cap	1	620
67	785079	Cutter Shaft	1	All
68	785128	Battery Box	1	620
69	785130	Battery Box Top	1	620
70	785134	Inner Belt Guard	1	All
71	803619	Outer Belt Guard	1	All
72	785581	Fuel Tank	1	620
73	788040	Manual Tube	1	All
74	796186	Handle	1	620 337S
	801623			337
75	802740	Frame	1	337 620
	802848			337S
	801609			337S
76	793512	Battery Hold-Down Strap	1	620
77	124A	Dust Cap	2	All
78	801490	Hose, 1/4" Fuel Hose	50"	620
79	801490	Hose, 1/4" Fuel Line	11"	All
81	786073	On/Off Switch w/ Black Knob	1	All
	786074			All
82	783561	Belt, 3 Groove	1	337 337S
	784056	Belt, 4 Groove		620
83	777108	24" Battery Cable (Black)	1	620
84	793517	43" Battery Cable (Red)	1	620
85	784208	Choke Cable	1	620
86	784207	Throttle Cable	1	620
87	783285	8" Lead Wire, Green	1	All
89	783395	Muffler	1	620
	784059	Muffler Canister		620
90	785508	Exhaust Deflector w/ Screws	1	337 337S
			1	620
92	786072	Wire Harness	1	337 337S
	794353			620
94,	802880	337 Branding Decal Set	1	337
95,	802879	337S Branding Decal Set	1	337S
99	802883	620 Branding Decal Set	1	620
96	780091	12V, 80 Amp Relay	1	620
97	82166	1/4" x 1/2" Self-Tap Screw	2	620
98	796222	Lock Bracket	1	All
100	801704	Latch Lever	1	337S
101	801684	Swivel Latch Mount	1	337S
103	82628	1/2-13 X 2.5 HHFB	1	337S
104	82621	5/16-18 X .75 HHFB	4	337S
106	801699	Cable, Latch to Brake	1	337S
107	802022	Cable Pin	2	337S
108	802023	Cable Cotter Key	2	337S

Parts List - Rev AC - 2024**Parts Highlighted in green fit the DOSKO13HP**

Item	Part #	Description	Qty	Model
110	82630	5/16-18 Lock Hex Flange Nut	2	All
111	801652	Hour Meter	1	337 337S
112	82024	3/8-16 X 1 1/4 HHSF	2	337S
113	82625	3/8-16 X 1.75 HHFB	6	337S
114	801634	Engine Riser	1	337S
115	801625	Corner Flap	1	337S
116	82290	3/8-16 Lock Nut	4	337S
117	801760	Pivot Hub	1	337S
118	82624	3/8-16 X 1" HHCS	3	337S
119	801620	Swivel Wear Plate	1	337S
120	82631	3/8-16 Lock Hex Flange Nut	3	337S
121	82720	5/16-18 U Nut	3	337S
122	82685	1/2"-20 Nylon Lock Nut	4	337S
123	801627	Dust Cap Guard	1	337S
125	801606	Swivel Sub-Base	1	337S

Complete 700 Series Tooth Set P/N GT700CTSET



Recycling



ENVIRONMENTAL PROTECTION: Please recycle any unwanted materials as opposed to disposing them as general waste. It is recommended the original is retained and used to store the product when not in use for prolonged periods of time. If this is not applicable ensure the materials are sorted and recycled in accordance with local regulations.



SPECIFICATION CHANGE: It is our policy to continually improve products to ensure these meet the rigours of the industry we serve. Therefore, as such we reserve the right to alter specifications, data, components & parts with-out prior notice.

WARRANTY: Please refer to the manufactures terms & conditions.

IMPORTANT: No liability will be accepted for the incorrect use of this product.

KEEP THIS BOOKLET FOR FUTURE REFERENCE

📞 Nottingham: 0115 946 1988 • London: 0208 830 3333 ✉ Nottingham: sales@hscgroupuk.co.uk • London: sean@hscgroupuk.co.uk 🌐 www.hscgroupuk.co.uk

The Hire Supply Company Terms & Conditions Apply At All Time E&OE